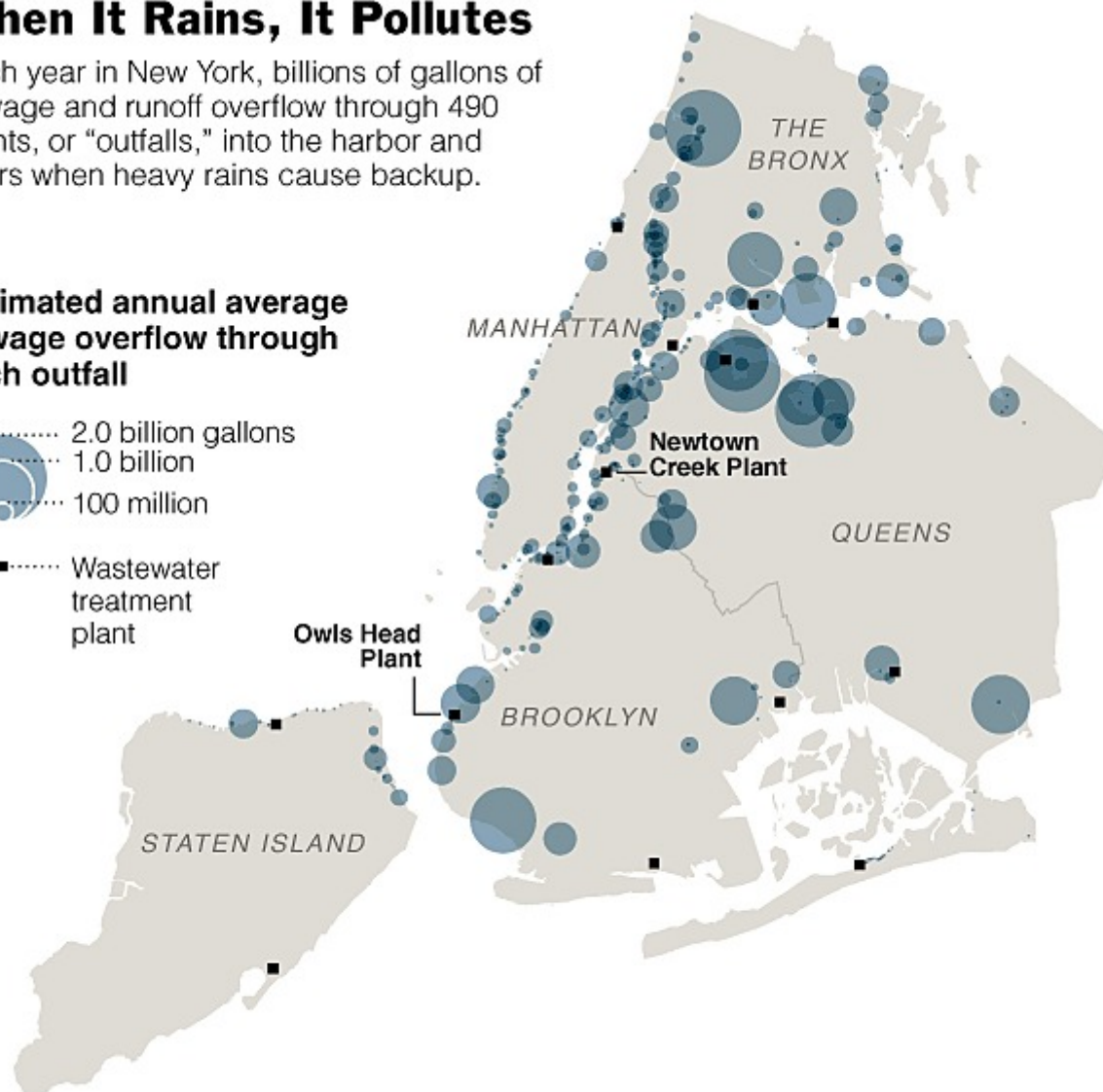
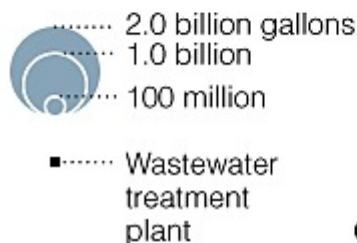


When It Rains, It Pollutes

Each year in New York, billions of gallons of sewage and runoff overflow through 490 points, or "outfalls," into the harbor and rivers when heavy rains cause backup.

Estimated annual average sewage overflow through each outfall



A combined sewer system

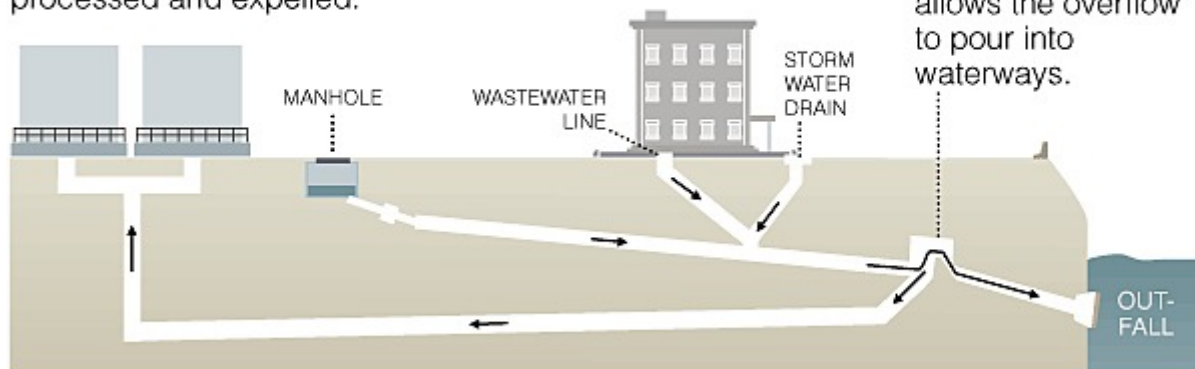
New York City has a combined sewer system in which wastewater from homes and businesses is combined with storm runoff from the street.

TREATMENT PLANT

A mixture of wastewater and storm water is processed and expelled.

REGULATOR

When the flow of wastewater is too great, the regulator allows the overflow to pour into waterways.



Sources: New York Department of Environmental Protection; "The Works: Anatomy of a City" by Kate Ascher

THE NEW YORK TIMES